

# SMART PARKING INNOVATIONS

Protection. Solutions. Software.



 **Parklio**

2024 Edition Catalogue



# Table of Contents

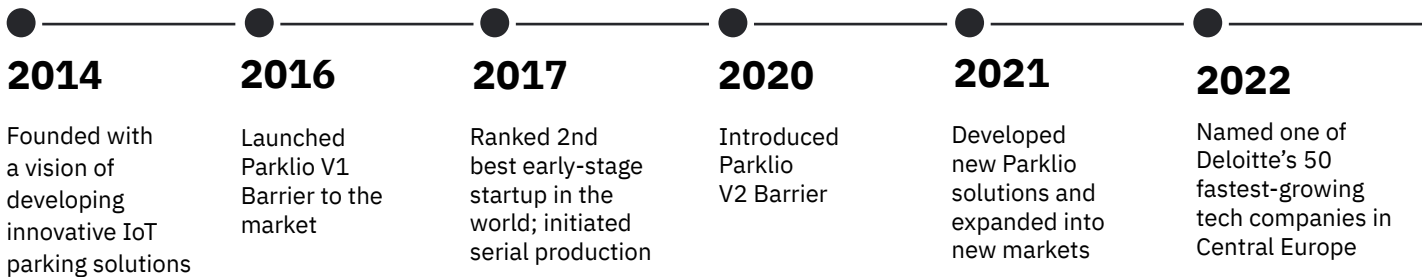
<b>A Story of Innovation</b>	<b>4</b>
<b>Parking Protection</b>	<b>5</b>
Parklio™ Barrier	<b>6</b>
Parklio™ Gate	<b>8</b>
Parklio™ Chain	<b>12</b>
Parklio™ Bollard	<b>14</b>
<b>Smart Solutions</b>	<b>16</b>
Parklio™ ANPR	<b>17</b>
Parklio™ Detect	<b>18</b>
Parklio™ Brain	<b>19</b>
Parklio™ Custom Solution	<b>20</b>
<b>Software</b>	<b>21</b>
Parklio™ PMS	<b>22</b>
Parklio™ Connect	<b>23</b>
Parklio™ API and SDK	<b>24</b>
<b>Parklio's Parking Innovations Across Industries</b>	<b>25</b>
<b>Our References</b>	<b>26</b>

# A Story of Innovation

Parklio is a forward-looking company dedicated to developing smart parking hardware and software that provides easy solutions to difficult parking problems.

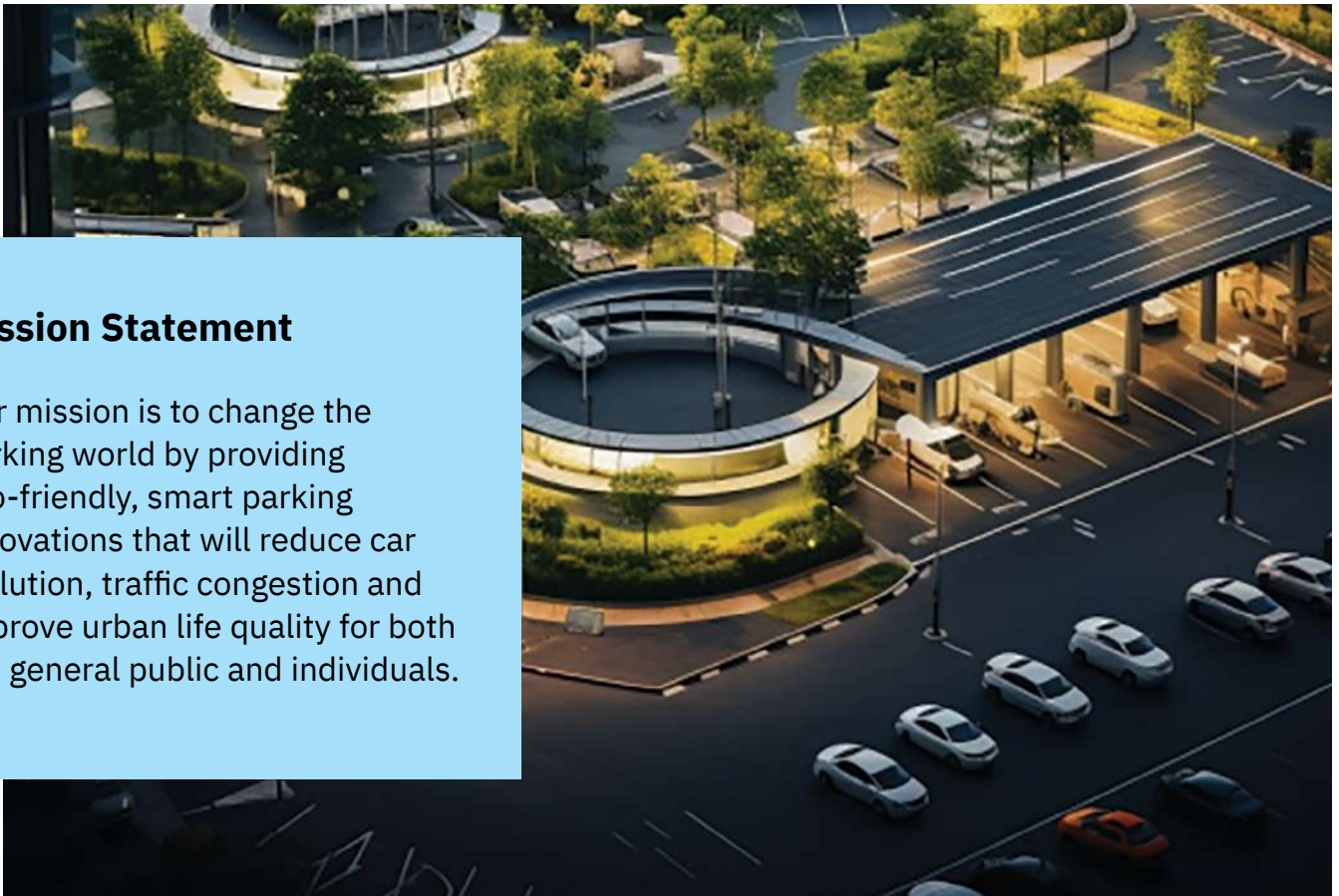
Parklio™ innovations focus on helping cities and businesses better manage their parking assets, processes, and customers.

All Parklio's products, solutions, and software are built around the idea that smart parking systems should be easy to use, reliable, and affordable for everyone. We use AI, machine learning, and predictive algorithms to build our parking innovations, with an emphasis on quality and affordability.



## Mission Statement

Our mission is to change the parking world by providing eco-friendly, smart parking innovations that will reduce car pollution, traffic congestion and improve urban life quality for both the general public and individuals.





## PARKING PROTECTION

Parklio's parking protection products will **help you control your parking access**, so you never have to worry about having unauthorized cars parked on your property.

---



### Smart Protection for Every Parking Setting

Parklio provides app-controlled parking protection, safeguarding your valuable parking spaces with intelligent, durable, and weather-resistant products designed for residential, commercial, and industrial settings.

### Quality You Can Trust

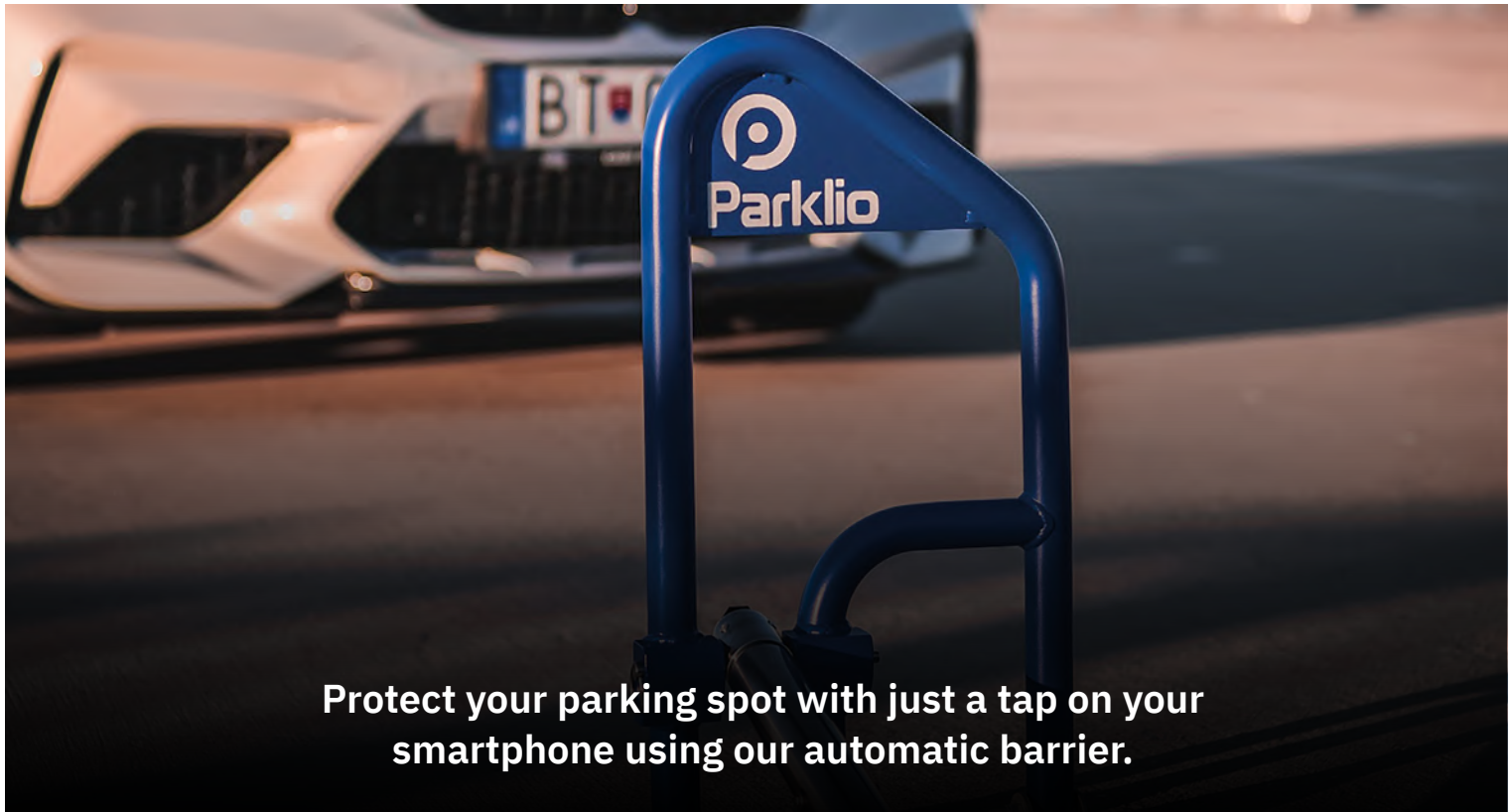
A 3-year warranty is a reflection of the confidence Parklio has in their products' durability, reliability, and performance. With a commitment to excellence and a focus on customer satisfaction, Parklio delivers products that are built to last.

### Reliable and Certified

All the products have earned the highest certifications, including **CE**, **ROHS**, and **FCC**. These certifications stand as a testament to Parklio's unwavering commitment to quality and safety. Parklio takes pride in exceeding industry standards, ensuring that our products not only meet but exceed your expectations.

### Tailored to Your Needs

Parklio's parking protection products offer seamless customization to align precisely with your unique requirements. Engineered to cater to the parking access control demands of every sector, from retail parking lot security to educational institutions, airports, city parking facilities, and beyond.



Protect your parking spot with just a tap on your smartphone using our automatic barrier.

## Parklio™ Barrier

is a smartphone-controlled barrier that safeguards parking spaces against unauthorized usage. Seamlessly connected through Bluetooth to a smartphone or tablet, it allows for effortless raising and lowering of the barrier directly from the vehicle. With a sleek and durable design, Parklio™ barriers protect your parking area and enable you to easily share access with whomever you choose.

## Technical Specifications

---

**Opening time** 4 s

---

**Height of open arch** 51.7 cm / 20.35 in

---

**Width** 33.1 cm / 13.03 in

---

**Length** 91.8 cm / 36.14 in

---

**Weight** 15 kg / 33 lbs

---

**Package size** 59 x 40 x 16 cm / 23.23 x 15.75 x 6.3 in

---

**Weight resistance** 9 t / 9.92 t (US)

---

**Material** Galvanized Steel, Stainless Steel

---



SKU 0177  
STANDARD MODEL



SKU 0241  
AC-POWERED MODEL



CUSTOM MODEL



SKU 0179

### PARKLIO KEYFOB

is a convenient remote control device designed to effortlessly manage your parking barrier, offering an intuitive alternative to smartphone app control.



SKU 0135

### GATEWAY

is a device that enables remote operation of up to 20 parking products, providing convenient real-time control over your parking barriers and their status.



SKU 0043

### SECURITY POST

is a long-lasting rubber parking post meant to increase the safety of your parking place. These posts protect your property by discouraging erratic parking and offering protection from car collisions.



SKU 0202

### DOUBLE BATTERY PACK

is a rechargeable power solution that significantly extends your barrier's lifespan, allowing it to operate for up to a year on a single charge.



SKU 0242

### CONSTANT POWER SUPPLY MODULE

is a reliable device that allows you to connect your barrier directly to a continuous source of power, eliminating the need for regular battery charging.



SKU 0111

### SAFETY PIN

is a practical component for the Parklio Barrier that splits into three pieces if the barrier is exposed to extensive force, allowing for simple replacement and restoring the barrier's functionality.



SKU 0258

### EXTENSION

is a valuable accessory, purpose-built to enhance safety and visibility in parking areas, catering especially to taller vehicles such as SUVs and trucks. The installation is so simple that anyone can set it up without difficulty.



SKU 9895

### I/O BOARD

facilitates integration of your parking barrier with various devices and systems offering real-time status updates on barrier position. The I/O Board is only compatible with the AC-powered version of the barrier.



COLOR  
SKU 0235

STICKER  
SKU 0259

### COLOR & LOGO CUSTOMIZATION

enables you to personalize the visual look of your parking barrier with your company's colors and brand logo. This customized option is great for companies who want to make a lasting and professional impression with their parking facilities.





Take charge of entrances, restricted areas, and traffic flow with our preconfigured barrier gate.

## Parklio™ Gate

is a sturdy, fully automated gate barrier that provides clients with versatile configurations through an extensive range of accessories. It's designed for swift and frictionless access control as well as simple access sharing from any place. With its durability and suitability for intensive use, Parklio Gate ensures longevity and reliable performance.



## Technical Specifications

**Power supply** 230 VAC / 50 Hz or 115 VAC / 60 Hz

**Motor power supply** 36 V DC

**Motor max. power** 220 W - 300 W

**Opening time** 2-8 s (depending on the arm length)

**Working temperature** -20 °C to +55 °C / -4 °F to 131 °F

**Duty cycle** 80%

**Protection degree** IP54

**Weight** 47.5 kg - 95 kg / 104.7 lbs - 209.4 lbs

**Available arm lengths** 2.2 m - 8 m / 7.2 ft - 26.2 ft



STANDARD MODEL

3m - SKU 0350  
 4m - SKU 0351  
 5m - SKU 0352  
 6m - SKU 0353  
 8m - SKU 0355



SOLAR MODEL

3m - SKU 0350 + SKU 2232  
 4m - SKU 0351 + SKU 2232  
 5m - SKU 0352 + SKU 2232  
 6m - SKU 0353 + SKU 2232  
 8m - SKU 0355 + SKU 2232





SKU 0318

### REMOTE CONTROL DEVICE

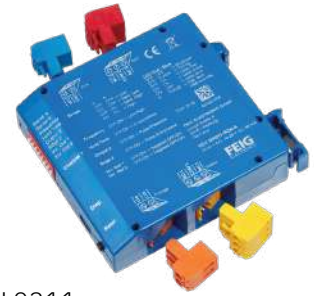
serves as a handy alternative to smartphone app control ensuring ease of use and flexibility in gate operation.



SKU 0309

### BACKUP BATTERY KIT

is an accessory that provides backup power supply in the event of a power outage, ensuring uninterrupted functionality of the associated gate barrier.



SKU 0311

### MAGNETIC LOOP DETECTOR

is a vehicle detection device that recognizes vehicles upon approaching the gate barrier, controlling its raising or lowering.



SKU 0306

### FIXED SUPPORT POST

is an extra component for a gate barrier that is anchored to the ground on the opposite side of the base to reinforce the arm barrier.



SKU 2232

### SOLAR KIT

includes a solar panel and accumulator unit, making it perfect for gate barriers in areas with no constant power supply.



SKU 0375

### KEYPAD/PIN-LOCK

is a supplementary component for the gate barrier, enabling users to input a code or a PIN for authorized access.



- 4m  
SKU 0313
- 6m  
SKU 0314
- 8m  
SKU 0315

### LED STRIPES

provide status indicators for the gate, displaying its current state as either open, closed, or experiencing issues, while also providing aesthetic lighting.



SKU 0414

### TIMER

is used to regulate the period of time that a gate barrier remains open and closed and allowing for precise adjustments to scheduled times, including specific days, hours, and minutes.



SKU 0412

### METAL PROTECTION FOR BASE

safeguards the parking gate barrier's base from vehicle impacts, thereby reinforcing the overall security and durability of the system.



SKU 0135

### GATEWAY

is a versatile accessory ideal for large parking facilities, capable of remotely controlling up to 20 devices, including gate barriers.



SKU 0222

### FLASHING LIGHT

acts as a visual signal, delivering essential information about the state of the gate barrier while significantly improving visibility.



4m  
SKU 0332  
6m  
SKU 0333

### ARM JOINT

enables the barrier arm to pivot or rotate, making it particularly well-suited for locations with limited vertical clearance, such as parking garages.



SKU 0306

### ADJUSTABLE FIXED SUPPORT POST

has the same function as the fixed support post, with the added benefit of adjustable height, making it well-suited for parking areas with uneven surfaces.



SKU 0307

### MOVABLE POST

functions as a mobile support mechanism for the gate barrier during its vertical movements, offering stability when the gate is lowered.



3m  
SKU 0290  
4m  
SKU 0293  
6m  
SKU 0295

### BARRIER ARM SKIRT

is an accessory designed to offer added access restrictions beneath the gate barrier arm, effectively preventing pedestrians from passing underneath.



SKU 0317

### PHOTOCELL POST

detects the presence of vehicles or objects in the barrier's path, triggering the gate to either raise or lower, allowing the passage through the gate.



SKU 0319

### RECEIVER

is employed to capture and process incoming signals transmitted via a remote control or keypad, enabling communication and interaction with the associated system.



SKU 0267

### INTERCOM

enables the verification of a visitor's identity before granting access through the gate, effectively enhancing the overall security framework.



SKU 0278

### RFID READER

facilitates gate barrier access by allowing drivers to scan their cards as they approach the gate, providing convenient access.



SKU 0327

### GSM MODUL

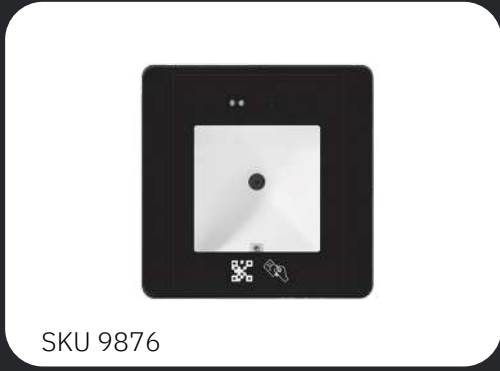
is a device that enables remote control of gate barriers through various means such as a smartphone application, text messaging, or phone calls.



SKU 9877

### PUSH BUTTON

is a remote device employed to open or close the gate barrier, offering convenient access control and emergency access capabilities.



SKU 9876

### QR CODE READER

allows drivers to use their smartphones to scan a pre-generated QR code, facilitating the opening of the gate barrier.



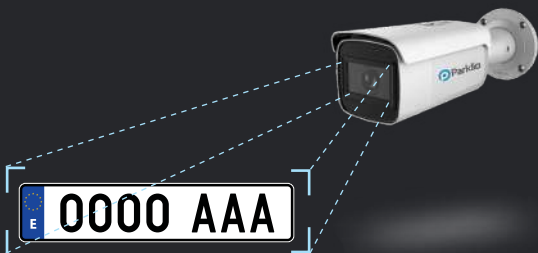
SKU 9875

### TRAFFIC LIGHT

serves as a signal to guide vehicle flow by indicating when it is safe for vehicles to pass through the gate barrier.

## Upgrade Your Parking Gate System

To enhance the automation of your parking gate system, we recommend integrating the Parklio™ Gate with our advanced Automatic Number Plate Recognition (ANPR) system. This powerful combination enables you to effortlessly manage access as the ANPR system reads license plates, streamlining the entry and exit process for a smoother parking experience.



Effortlessly secure wide entry access with our smartphone-controlled chain barrier.

## Parklio™ Chain

is an automatic raising chain barrier designed to secure access points up to 20 meters wide. Comprising two sturdy parking posts and a corrosion-resistant galvanized steel chain, Parklio Chain exemplifies durability and reliability. The product is available in nine different sizes, providing versatile protection for a wide range of applications.



## Technical Specifications

**Power supply** 230 VAC

**Motor Power supply** 24 VDC

**Opening time** 10 s

**Power** 170 W

**Duty cycle** INTENSIVE USE

**Operating temperature** -20 °C to +60 °C / -4 °F to +140 °F

**Chain max. length** 20 m / 65.6 ft

**Available chain lengths** 4 m - 20 m / 13.1 ft - 65.6 ft

**Motor weight** 46 kg / 101 lb



- 4m - SKU 0365
- 6m - SKU 0366
- 8m - SKU 0367
- 10m - SKU 0368
- 12m - SKU 0369
- 14m - SKU 0370
- 16m - SKU 0371
- 18m - SKU 0372
- 20m - SKU 0373

STANDARD MODEL



- 4m - SKU 0365 + SKU 2232
- 6m - SKU 0366 + SKU 2232
- 8m - SKU 0367 + SKU 2232
- 10m - SKU 0368 + SKU 2232
- 12m - SKU 0369 + SKU 2232
- 14m - SKU 0370 + SKU 2232
- 16m - SKU 0371 + SKU 2232
- 18m - SKU 0372 + SKU 2232
- 20m - SKU 0373 + SKU 2232

SOLAR MODEL





SKU 0256

### REMOTE CONTROLLER

is a convenient accessory that allows you to control your chain remotely without having to use the Parklio Connect App.



SKU 0222

### FLASHING LIGHT

is a safety accessory designed to enhance visibility and let drivers know when the automatic chain barrier is in use, which helps avoid accidents.



SKU 0183

### SAFETY JOINT

is a crucial component engineered to break under excessive force, protecting your Parklio chain from damage. It's cost-effective and easy to replace.



SKU 0226

### BATTERY KIT

comprises two auxiliary 24 Vac batteries and a charger, enabling autonomous operation of the chain without the need for electric power and serving as a backup in the event of a power outage.



SKU 0268

### PHOTOCELLS

are an additional safety detection system that enables the Parklio Chain to raise or lower automatically. It provides extra control over your smart chain barrier.



SKU 0414

### TIMER

enables customization of the opening and closing times to align with your specific business requirements, empowering you to establish a tailored schedule that suits your business model.



SKU 0412

### METAL PROTECTION FOR BASE

is a valuable safety accessory that provides an extra layer of protection to the base of a chain, effectively preventing car collisions and enhancing overall safety.



SKU 9877

### PUSH BUTTON

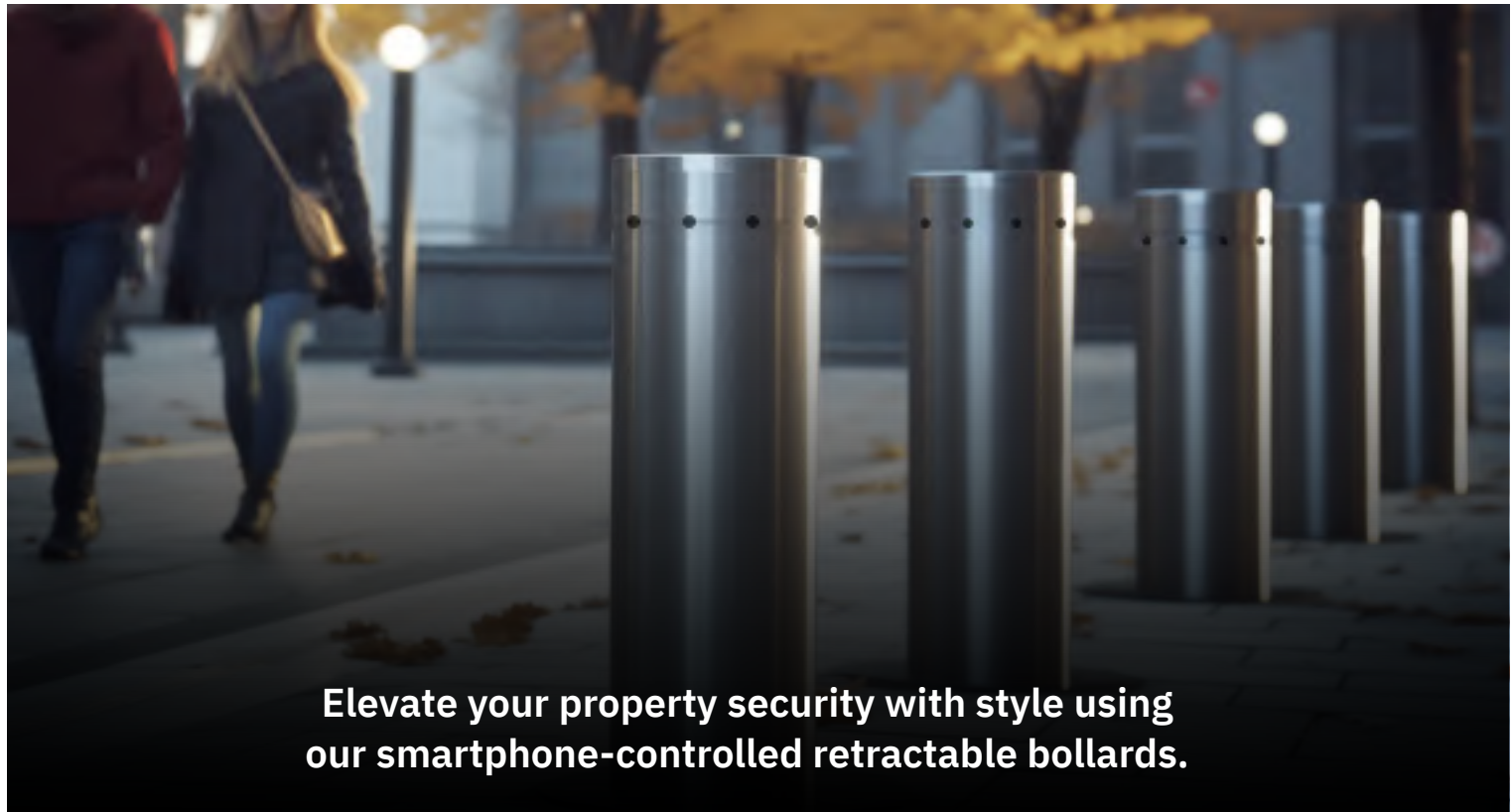
is a device that allows you to open and close the chain remotely. It is a great way to provide quick access to emergency services, such as ambulances or fire trucks.



SKU 2232

### SOLAR PANEL KIT

enables the installation of a chain barrier in locations where a constant power supply is not available. It harnesses solar energy for operation, which is both environmentally friendly and cost-effective.



Elevate your property security with style using our smartphone-controlled retractable bollards.

## Parklio™ Bollard

is a fully-retractable automatic parking bollard that seamlessly combines high-security features with an elegant design, giving the desired aesthetics to your private property. It offers smartphone control and straightforward access sharing, making it a top choice for efficient and secure access control management.



## Technical Specifications

---

**Model** 600/800

---

**Power Supply** 230 VAC

---

**Motor power Supply** 24 VDC

---

**Power** 60 W

---

**Duty cycle** 70%

---

**Operating temperature** -20 °C to +50 °C / -4 °F to +122 °F

---

**Covers** Anti-slip stainless steel 4 mm

---

**Weight capacity when closed** 20000 kg / 44100 lb

---

**Diameter** 204 mm / 8 in

---



**Model 600** - SKU 0238  
**Model 800** - SKU 0357

STANDARD MODEL



**Model 600** - SKU 0238 + SKU 2232  
**Model 800** - SKU 0357 + SKU 2232

SOLAR MODEL



SKU 0254

### REMOTE CONTROL DEVICE

lets you lower the bollard with a single press of a button. It can be used instead of or in addition to the Parklio Connect App.



SKU 0222

### FLASHING LIGHT

is an optional safety accessory for the automatic parking bollard, designed to enhance visibility and indicate the movement of the bollard.



SKU 0268

### PHOTOCELLS

are infrared light sensors that enable the automated closing of your parking bollards, raising the bollard when detecting a vehicle exiting the lot.



SKU 0414

### TIMER

offers precise control of traffic flow in your car park, allowing easy programming to raise or lower parking bollards based on specific schedules.



SKU 0349

### BATTERY BACKUP

is an accessory that ensures uninterrupted operation and access control for your bollard, even in the absence of a power supply.



SKU 0321

### FIXED BOLLARD

is a sturdy steel post often used with retractable bollards to provide a comprehensive access control solution for both pedestrians and vehicles.



SKU 9877

### PUSH BUTTON

is a remote control device that enables more convenient opening and closing of the bollard making it a valuable asset for timely response in critical situations.



SKU 2232

### SOLAR PANEL KIT

is an eco-friendly power solution for automatic bollards, eliminating the need for a constant power supply by efficiently converting sunlight into electricity.

## SMART SOLUTIONS

Parklio is here to help you prevent illegal parking, enforce your rules via control and monitoring, and **manage your lot more effectively**. From a small parking lot to a multi-level car park, we have the right solution for your parking needs.

---



### Efficient Parking Space Utilization

Parklio creates intelligent, connected, and efficient parking solutions to help our customers make the most of their parking space.

### Complete Parking Solutions Tailored to Your Industry

Tailor-made solutions, designed and built by Parklio, cater to a range of needs, from private residential projects to large retail, business, and city parking facilities.

### Parking Control and Monitoring

Parklio's smart parking solutions use cutting-edge technology to address parking challenges, offering robust control and monitoring tools to simplify parking lot management and prevent unauthorized parking.

### Lifelong Updates

With Parklio you get lifetime free updates for your smart parking solution system, providing you with ongoing access to the latest features and improvements at no extra expense.





Frictionlessly manage access control to your parking facility with the advanced Parklio™ ANPR stand-alone system.

## Parklio™ ANPR

is a parking-specific all-in-one solution that enables frictionless access control by capturing vehicle images and recognizing license plate numbers on moving vehicles. This versatile system can be effortlessly integrated with any physical parking protection product, like a boom gate or automated chain barrier, facilitating the automatic entrance and exit of authorized vehicles.

## Technical specifications

---

**Sensor** 1/1.8" Progressive Scan CMOS, 1920 × 1080

---

**Aperture** 2.8mm to 12mm :F1.2 to F2.5 or  
8 to 32mm : F1.7 toF1.74

---

**Supplement Light** IR, 850nm, 50 m / 164 ft range  
( 100 m/ 328 ft with 8-32 mm )

---

**Power** 12 VDC, max. 14.3W or PoE IEEE802.3at max. 16.8W

---

**Dimension** Ø 144 × 347 mm / Ø 5.7 in × 13.7 in

---

**Operating Conditions** -40 °C to 60 °C / -40 °F to 140 °F.

Humidity 95% or less (non-condensing)

---

**License plate recognition rate** ≥98%

---



SOFTWARE



SKU 0239

ANPR CAMERA



Experience the full suite of intelligent Parklio features through the strength of our Brain solution.

## Parklio™ Brain

is an electronic module that enhances your existing access control devices with Parklio's smart functions, remote control capabilities, real-time information, and key-sharing options. It holds CE and ROHS certificates, ensuring top-quality performance. This versatile module can also be integrated into various applications beyond parking and access protection such as garage doors, driveway gates, and automatic doors.



SKU 9925  
WALL MOUNT KIT

## Technical specifications

---

**Input Voltage** 7 VDC to 32 VDC, 12 VAC to 24 VAC

---

**Working temperature range** -20 °C - +60 °C / -4 °F - +140 °F

---

**Working humidity** Up to 90 % RH

---

**Dimensions** 31.25 mm x 70 mm x 89.6 mm  
1.29 in x 2.75 in x 3.52 in (h x w x d)

---

**Wireless Connectivity** BLE

---

**Over-the-Air upgrades** Yes

---

**Antenna interface** External 2.4 GHz antenna  
with SMA connector

---

**Max. supported connections** max. 4 user may be  
connected to the device

---

**IO Interface** 2 x N.O. 48 VDC, 32 VAC, 2A Relays  
(open and close output)  
2 x Digital inputs for position sensors

---



SKU 0146  
BRAIN



**Gain real-time parking occupancy insights and analytics with Parklio Detect, guaranteeing the efficiency of your parking management.**

## Parklio™ Detect

is a smart AI-based system that monitors, analyzes, and reports on vehicle parking data in both on-street and off-street parking areas, providing monitoring for safety and security. The system is operational 24/7 in all weather conditions, allowing for constant access to parking lot data. It is simple to implement and can be used with your current cameras without any additional changes to the existing infrastructure.

## Technical specifications

---

**Vision processing unit** Intel® Movidius™ MA2485 VPU

---

**RAM Memory** 4Gb

---

**Power Supply** PoE (IEEE 802.3at)/DC 12V/AC 24V

---

**Image Sensor** 1/1.8" progressive scan

---

**Picture Elements** 3840 (h) × 2160 (v) 8MP

---

**Focal Length** 4.46 mm - 11 mm / 113.28 in - 0.433 in

---

**IR Light Distance** 30 m / 98.42 ft

---

**Dimensions** 4 mm × 77 mm × 293.7 mm

/ 0.15 in × 3.03 in × 11.55 in

---

**Operating temp. (IR off)** -10 °C ~ 60 °C / -14 °F~ 140 °F

---

**Operating humidity** 20% to 55%

---

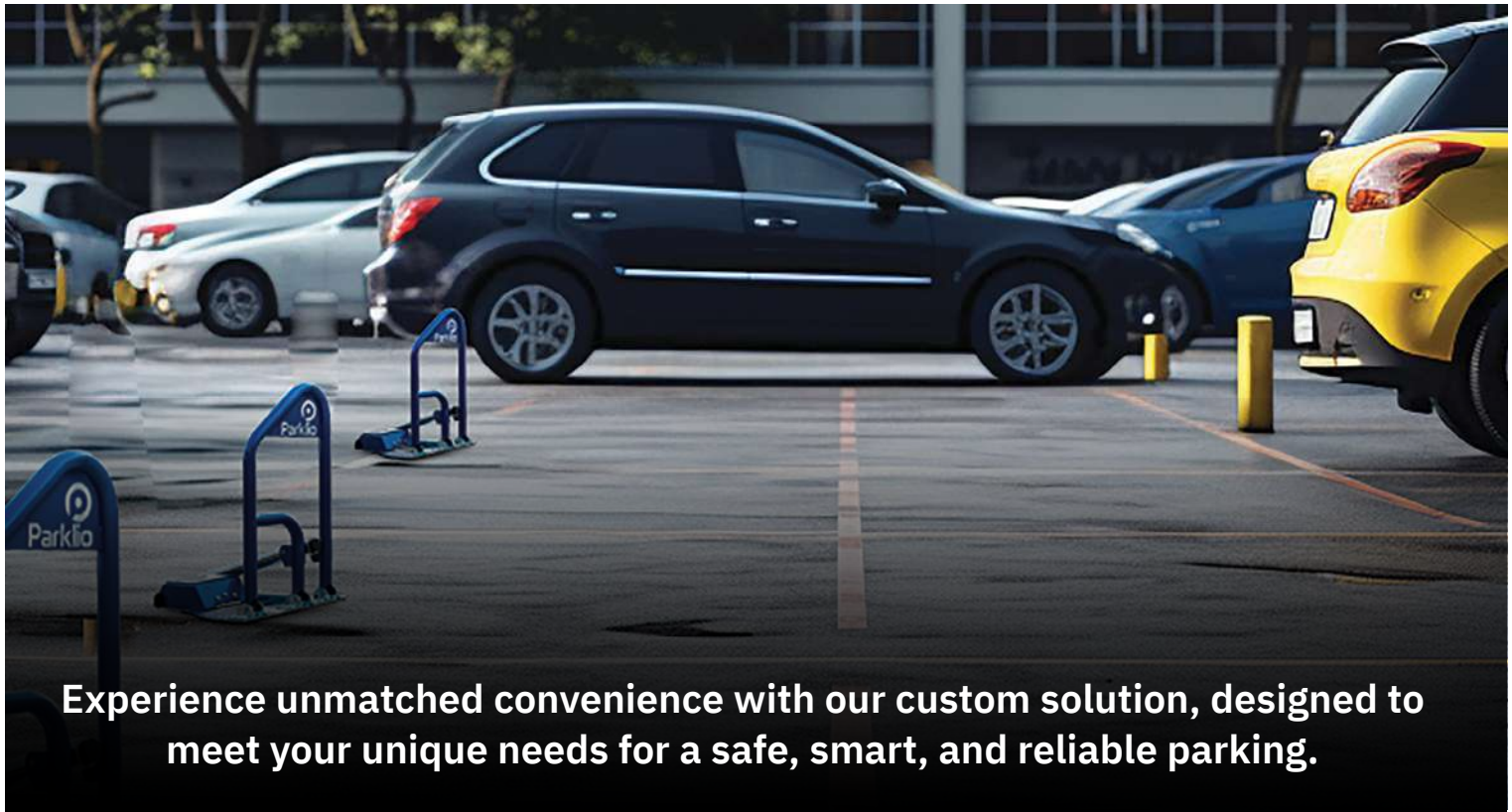


SKU 0358  
DETECT BOX



SKU 0359  
DETECT CAMERA





Experience unmatched convenience with our custom solution, designed to meet your unique needs for a safe, smart, and reliable parking.

## Parklio™ Custom Solution

is the ideal choice for businesses looking for tailor-made parking solutions. We understand the value of customization, and the Parklio team is committed to working closely with you to craft a parking solution that perfectly aligns with your specific needs, integrating unique operating characteristics, cutting-edge technologies, and customizable options.

## Make your vision a reality

### CONCEPTUALIZATION

Share your parking vision, and we'll transform it into a tailored concept, no matter the project's size.

### DEVELOPMENT

Leverage advanced Parklio technology as we turn your concept into a tangible solution.

### IMPLEMENTATION

Approve the project, and Parklio will seamlessly implement your custom solution with comprehensive instructions.

### SUPPORT

Receive continuous training and expert guidance after installation to ensure your comfort with the new technology.



# SOFTWARE

Experience smooth parking operations **management and optimized business efficiency** with our real-time parking software solutions.

---



## Reliable Control and Management

Parklio software provides centralized management for multiple parking lots and offers control over parking protection products making it an ideal solution for various businesses and institutions, helping them better manage their available parking spaces.

## Lifelong Software Updates

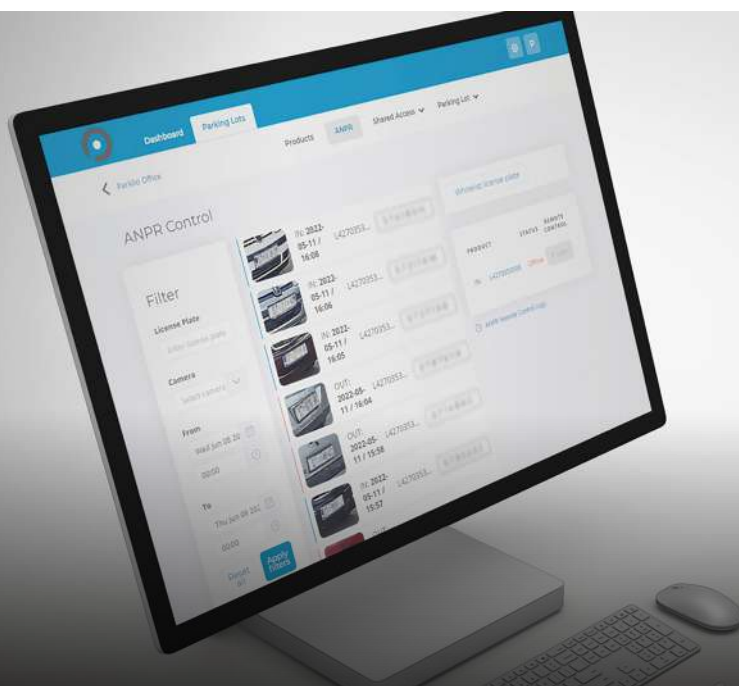
The commitment of Parklio to lifelong software updates ensures that your parking management remains consistently efficient, allowing you to adapt to changing needs and technological advancements with ease.

## Performance Tracking and Planning

With Parklio software, you can efficiently monitor your parking lot's performance using revenue reporting. This tool helps identify areas for revenue optimization, plan for expansion, assess operational costs, and analyze overall expenses.

## Integrability with Other Softwares

Parklio software is designed for easy integration with various third-party systems, including accounting software and ticketing systems. By integrating our software into your current applications, web apps, or platforms, you can quickly experience the advantages of improved parking management.



Optimize your parking management with our cloud-based software, streamlining operations, improving traffic flow, and reducing manual work.

## Parklio™ Parking Management System

is a scalable software with a user-friendly interface that enables efficient administration and dependable remote control. With global implementation capabilities, our PMS software empowers you to optimize profits and remotely oversee all your parking operations. Thanks to the access control capabilities you can conveniently grant access using a one-time-only web link, digital keys, and parking passes or bars on validation tickets.

### Advantages for parking owners:

- › Smart reporting
- › Occupancy optimization
- › Remote product control
- › Dynamic system adjustment
- › Smart parking lot organization

### Advantages for customers:

- › Real time information
- › Reliable parking space reservation
- › Fully automated parking lot
- › Maximum security
- › Seamless user experience



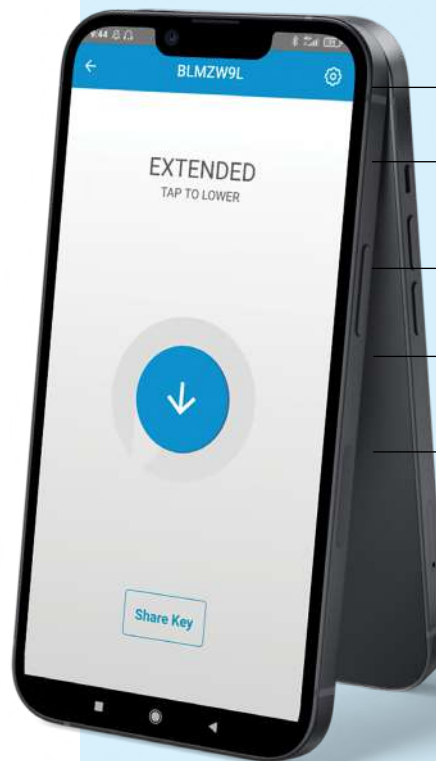
**Easily grant access to your parking spaces using our app, providing Bluetooth-controlled, internet-free access through digital key sharing.**

## Parklio™ Connect

is a free mobile app designed to manage and control Parklio parking protection products, using a smartphone or tablet. With Parklio Connect, users can easily add new products to their accounts, manage access and view the status of their parking protection, all from one simple-to-use interface. The app uses Bluetooth technology to connect with parking protection products, ensuring a secure and reliable connection, even in areas with limited signal strength.



## Unique features of the Parklio Connect app



- Bluetooth-based app
- No need for internet connection
- Simple to use interface
- Key sharing and blocking
- Navigation to the barrier location





**Elevate your business using our API or SDK to enhance parking security, optimize operations, and innovate services.**

## **Parklio™ API and SDK**

are versatile tools designed for seamless integration of your existing systems with Parklio products, so you can scale your operations and monitor parking space usage in real time. Our technology can be integrated with your website and mobile apps to show available spots to your customers when they are looking for a place to park, optimize the use of your parking facility, reduce traffic, and cut down on operational costs.

## **Parklio API Integration Cases**

T-Mobile enhanced their EV reservation app by incorporating Parklio Barriers and API, guaranteeing reserved EV charger availability. The barrier secures the spot until users unlock it using a digital key, providing a top-notch customer experience.

OMV and Parklio have launched a pilot project at OMV petrol stations in Hungary with the goal of improving the user experience by integrating Parklio API into OMV's evolving parking system.

Sonae Sierra's parking reservation app enhances shopping mall visits through Parklio API integration, enabling users to reserve, pay for, and control Parklio Smart Barrier-protected spots for improved customer satisfaction and operational efficiency.



# Parklio's Parking Innovations Across Industries

At Parklio, we are bringing unique and efficient parking solutions to everyone facing parking challenges. Our innovations are versatile and adaptable, catering to a wide range of industries, from private projects to large retail, commercial, and municipal parking facilities.

---

- Banking Sector
- Gym and Fitness Studios
- Automotive Industry
- Car Rental and Taxi Companies
- Condominiums and Buildings
- Cities and Municipalities
- Leisure and Hospitality Sector
- EV Charging Stations
- Corporate Parking
- Educational Institutions
- Event Parking
- Airports
- Marinas
- Retail Industry
- Hospitals and Polyclinics



# REFERENCES

Parklio has a proven history of helping companies, municipalities, and private operators to have full control over their parking assets, maximize profits, be more environmentally friendly, and make drivers happier.



**+ 4500**  
Companies

**+ 11 000**  
Users

Rely on our smart parking products and solution every day





---

Benefit from our know how

# CONTACT US



+ 385 97 7247 276



info@parklio.com



www.parklio.com

---

Find us on social media



@parklioofficial



@parklioofficial



Parklio



@parklioofficial