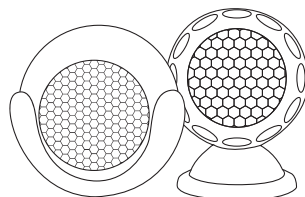


feelspo^ot

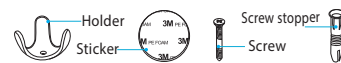
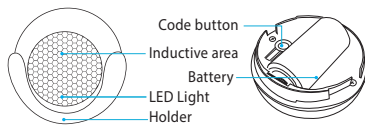
MOTION SENSOR

FS-PR01W

INSTRUCTION



Product configuration



Reset:

- (1) Press the reset button for 6 seconds till the indicator flash rapidly. Then device turns to smart wifi mode.
- (2) Press the reset button again for 6 seconds till the indicator flash slowly. The device turns to AP mode.

Specifications

Battery: CR123A-3V X 1
 Standby current: 13uA
 Operate current: 120mA-130mA
 Standby time: 5 years
 Operate time: 1 year (15 times/day); 2 years (7 times/day)
 Wireless type: 2.4GHz
 Wireless standard: IEEE 802.11b/g/n
 Wireless range: 45M
 Sensitive distance: 4-6M
 Operating Temperature: 0°C ~ 40°C (32°F ~ 104°F)
 Operating Humidity: 20% ~ 85%
 Storage Temperature: 0°C ~ 60°C (32°F ~ 140°F)
 Storage Humidity: 0% ~ 90%
 Size: 50mm x 48mm x 48mm



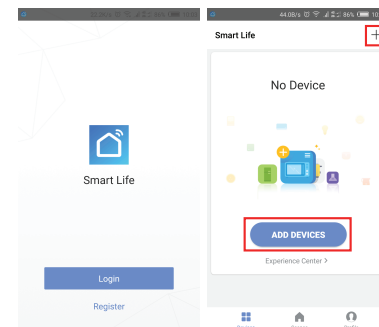
Download App

1. Android phone: Download "Smart life" from Google play store
2. IOS device: Download "Smart life" from APP store.



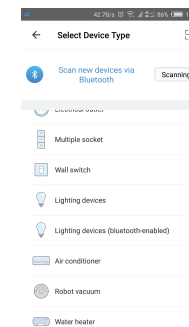
Register and login

1. Run "Smart life" from your smartphone.
2. Register and login



Add Device

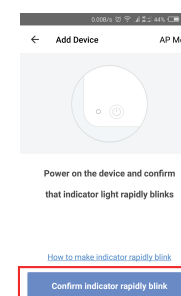
Select the item that you want to add, add the device via Smart WiFi or AP mode.



Network Configuration

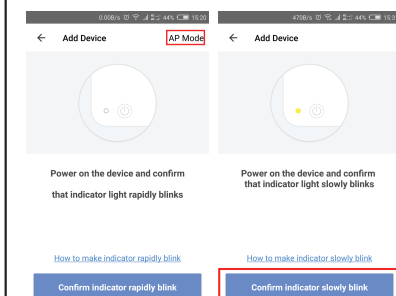
1. Smart WiFi Mode:

Pressing the resetting button for 6s, the LED will rapidly blink. That is Smart WiFi mode.



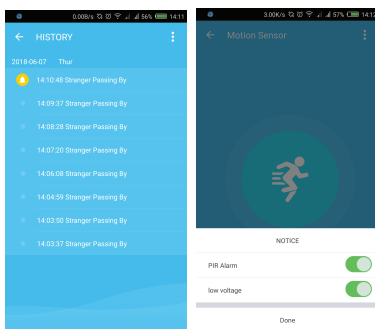
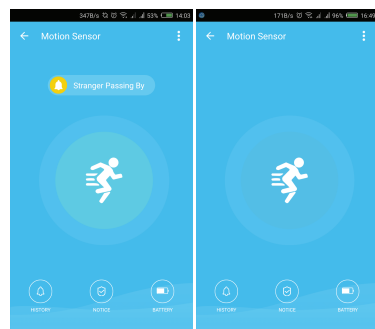
2. AP mode:

Pressing the resetting button for 6s after the LED blink slowly, the device is in AP mode to configure the network.



Main function

1. Operate status, alarm | normal (device react time gap is about 1 minute, means device can only be triggered once in 1 minute)
It takes 3-5 seconds to receive the push notification after the device triggers.
2. Alarm recording (click "HISTORY")
3. Turn on and turn off the alarm (click "NOTICE". No any alarm push notification, only alarm record)
4. Linkage setting: connect 2 devices via scene setting.

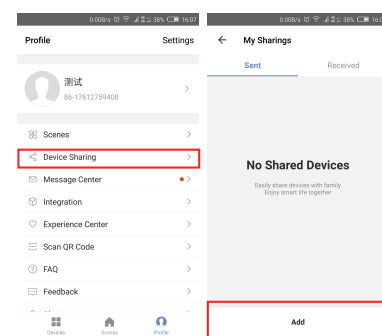
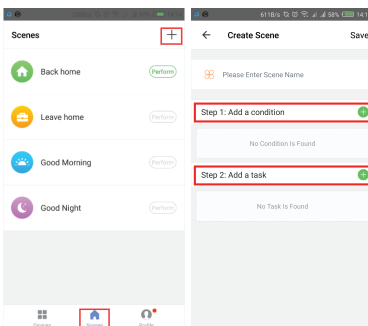


Alarm recording

Turn on/off the alarm

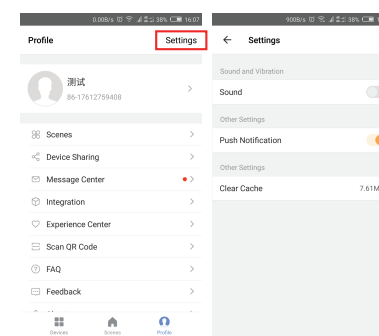
Device Sharing

Device Sharing: Allow others to control the device by sharing device (note: you can delete the sharing in profile setting)



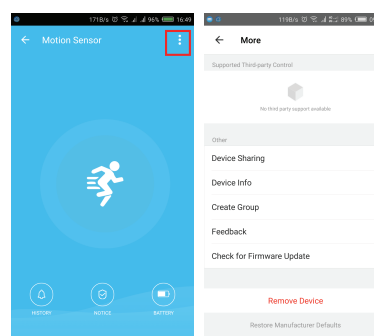
Push Notification

Enable to turn off.



Remove device

Take out the battery and then install it, wait for about 10-20 seconds to add device again, if device reset failed.



LED State

Device Status	LED State
Smart Wi-Fi	Indicator flashes quickly
AP mode	Indicator flashes slowly
Triggered	LED will rapidly blink, and OFF after scheduled time
suspend mode	Indicator off
Reset	Indicator lights up for 4s and after 2 seconds lights off, device goes into configuration mode



Make Your Home Smarter